

**The South African
Nursing Council**

(Established under the Nursing Act, 1978)



**Die Suid Afrikaanse
Raad op Verpleging**

(Ingestel ingevolge die Wet op Verpleging, 1978)

Examination for Enrolment as a Nursing Auxiliary

(Government Notice R.2176 of 19 November 1993)

November 1998

Instructions to Candidates:

1. The duration of the paper is three hours.
2. Only four questions are to be answered – a total of 100 marks.
3. One full mark will be allocated to each correct, complete and relevant statement.

Eksamen vir Inskrywing as Verpleeghulp

(Goewermentskennisgewing R.2176 van 19 November 1983)

November 1998

Instruksies aan Kandidate:

1. Die tydsduur van die vraestel is drie uur.
2. Slegs vier vrae moet beantwoord word – 'n totaal van 100 punte.
3. Een volle punt sal vir elke korrekte, volledige en toepaslike stelling toegeken word.

Question 1 **[25]**

- 1.1 Describe the responsibility of a nursing auxiliary towards a patient who refuses to eat. [5]
- 1.2 Describe the measures you would take to ensure the safety of a blind patient in the ward. [5]
- 1.3 List six complications of a dirty mouth. [3]
- 1.4 Describe the measures you would take to prevent the spread of infection by means of the following:
- 1.4.1 Hands [3]
 - 1.4.2 Linen [2]
 - 1.4.3 Eating utensils [2]
 - 1.4.4 Personnel [2]
- 1.5 Describe the prevention of noise in the ward [3]
-

Vraag 1 **[25]**

- 1.1 Beskryf die verantwoordelikheid van die verpleeghulp teenoor 'n pasiënt wat weier om te eet. [5]
- 1.2 Beskryf die maatreëls wat u sal tref om die veiligheid van 'n blinde pasiënt in die saal te verseker. [5]
- 1.3 Lys ses komplikasies van 'n vuil mond. [3]
- 1.4 Beskryf die maatreëls wat u sal tref om te voorkom dat infeksie deur middel van die volgende versprei:
- 1.4.1 Hande [3]
 - 1.4.2 Linne [2]
 - 1.4.3 Eetgerei [2]
 - 1.4.4 Personeel [2]
- 1.5 Beskryf die voorkoming van geraas in 'n saal. [3]
-

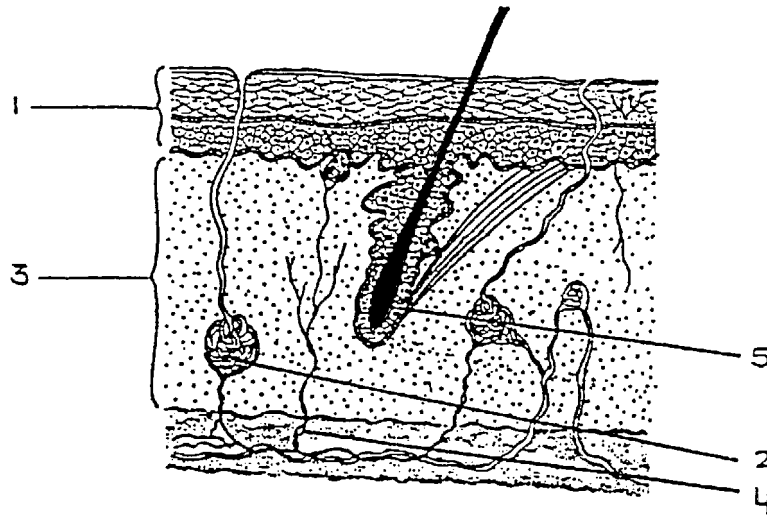
Question 2

[25]

2.1 Describe the specific measures you would take to ensure that linen supplied in the ward is adequate. [5]

2.2 Identify the structures indicated on the diagram of the skin.

Write only the number and the correct answer in your answer book e.g. 6 = nerve end. [5]



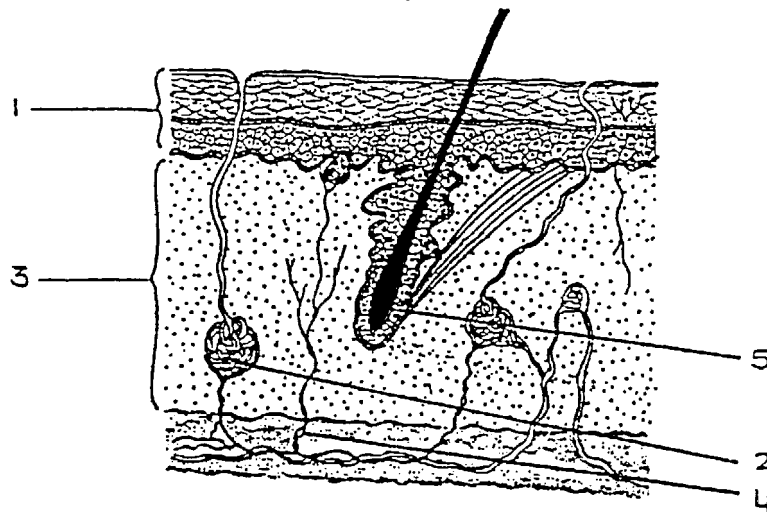
Vraag 2

[25]

2.1 Beskryf die spesifieke maatreëls wat u sal tref om te verseker dat linnevoorrade in die saal voldoende is. [5]

2.2 Identifiseer die strukture aangedui op die diagram van die vel.

Skryf slegs die nommer en korrekte antwoord in u antwoordboek bv. 6 = senuwee-eindpunt. [5]



- 2.3 Describe the nursing of a patient in traction [5]
- 2.4 Describe the advice you would give to a mother with regard to the prevention of oral thrush in her baby. [5]
- 2.5 Describe the first aid for a person with severe chest pain. [5]

Question 3 [25]

- 3.1 Name six conditions favourable for the growth and multiplication of micro-organisms. [3]
- 3.2 Describe the preparing of a patient for a lumbar puncture. [5]
- 3.3 Describe the advice to a group of young mothers regarding the hygienic care of bottles and teats before and after bottle-feeding. [6]
- 3.4 Describe the five functions of water in the human body. [5]
- 3.5 Describe the first aid you would give to a child with paraffin poisoning. [6]

-
- 2.3 Beskryf die verpleging van 'n pasiënt in traksie. [5]
- 2.4 Beskryf die advies wat u aan 'n moeder sal gee met betrekking tot die voorkoming van mondspru by haar baba. [5]
- 2.5 Beskryf die noodhulp vir 'n persoon met erge borskaspyn. [5]

Vraag 3 [25]

- 3.1 Noem ses toestande wat gunstig is vir die groei en vermenigvuldiging van mikro-organismes. [3]
- 3.2 Beskryf die voorbereiding van 'n pasiënt vir 'n lumbaalpunksie. [5]
- 3.3 Beskryf die advies aan 'n groep jong moeders met betrekking tot die higiëniese versorging van bottles en spene voor en na bottelvoeding. [6]
- 3.4 Beskryf vyf funksies van water in die menslike liggaam. [5]
- 3.5 Beskryf die noodhulp wat u aan 'n kind met paraffien vergiftiging sal gee. [6]